

TROFFER FIXTURE

2x2 and 2x4 1 LAMP

MFTR

Application

Replacement for T12 Recessed Mount Fixture

Construction

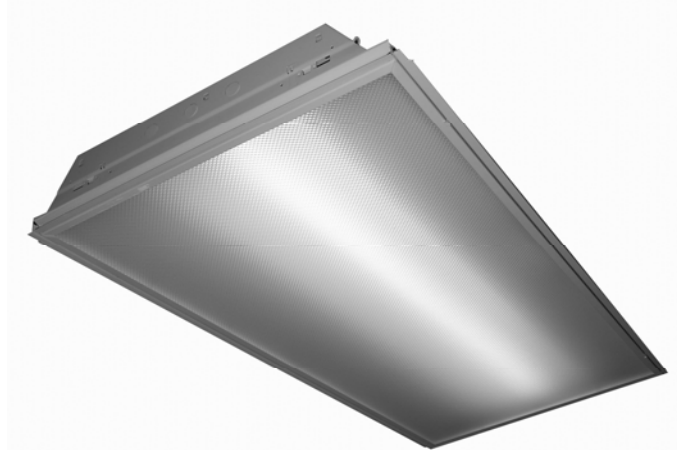
Reflectors: Precision formed, high performance, 95% total reflectance specular reflector, warranted for 25 years or 91% total reflectance white pre-painted aluminum.

Body: Body, ends and brackets are manufactured from code gauge cold rolled steel and have white baked enamel finishes. Access Plate on housing top and flush Knockouts on ends for mounting and electrical connections

Lens: Standard - Pattern 12 Acrylic Prismatic.
Optional - Clear, Poly Carb, etc...

Ballast: Standard ballast are high performance electronic, Class P, non PCB, sound rated A, UL certified.

Mounting: Recessed mounted



Electrical

UL listed wire rated for required temperature and voltage. Lamps are secured with twist-locking sockets.

Warranty

One year standard warranty on fixture. Ballast carries 3-5 year manufacture warranty.

Options

Reflector Material, Ballast and Lamps (See available options)

Features

- Total Luminaire Efficiency: 43.9%
- Spacing Criteria 0-Deg: 1.3 0-Deg: 1.52
- Available in both T8 and T5
- Optional Factory supplied lamps are available in various CRI ratings, temperature colors and rated life Ballast and wiring access
- Ballast and wiring access without the use of tools.
- Instant Restrike
- Dimming/Occupancy sensor compatible

Ordering Information

Use the Flow chart below to configure the part number. Actual part number may vary due to configuration.

| | |
|-------------|---|
| MFTR | Type TR Troffer Recessed Fixture |
| | Fixture Size 22 - 2' x 2' 42 - 4' x 2' |
| | Number of Lamps Req'd 12 - 1-2' 14 - 1-4' |
| | Ballast T8H - T8 "L" (120-277v) T8N - T8 "N" (120-277v) T5H - T5 "H" (120-277v) |
| | Reflector Material W - White pre painted aluminum 91% TR U - Ultimate aluminum 95% TR |
| | Options See Options Sheet <input type="checkbox"/> Ballast <input type="checkbox"/> Lamps <input type="checkbox"/> Lens |

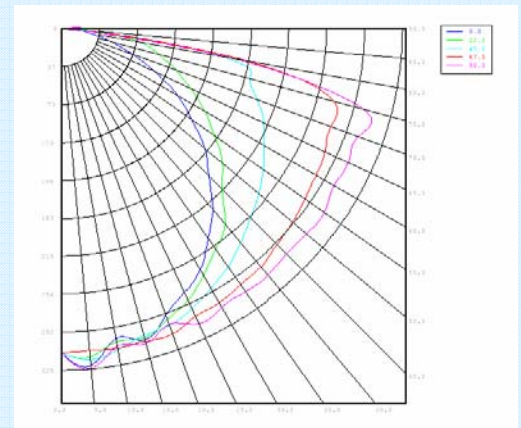
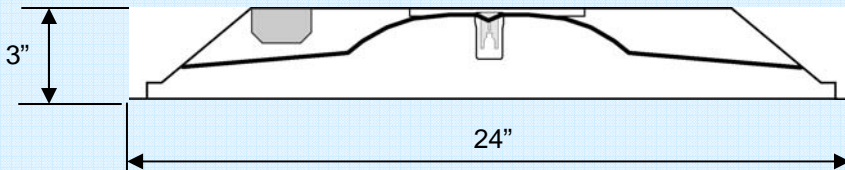
Photometrics

Coefficient of Utilization

1 FO32 Fixture Report Number

| RC | 80 | | | | 70 | | | | 50 | | | 30 | | | 10 | | | 0 |
|----|----|----|----|----|----|----|----|----|----|----|----|----|----|----|----|----|----|----|
| RW | 70 | 50 | 30 | 10 | 70 | 50 | 30 | 10 | 50 | 30 | 10 | 50 | 30 | 10 | 50 | 30 | 10 | 0 |
| 0 | 51 | 51 | 51 | 51 | 50 | 50 | 50 | 50 | 48 | 48 | 48 | 46 | 46 | 46 | 44 | 44 | 44 | 43 |
| 1 | 46 | 43 | 41 | 39 | 45 | 42 | 40 | 39 | 41 | 39 | 37 | 39 | 37 | 36 | 37 | 36 | 35 | 34 |
| 2 | 41 | 37 | 33 | 30 | 40 | 36 | 33 | 30 | 34 | 32 | 29 | 33 | 31 | 29 | 31 | 30 | 28 | 27 |
| 3 | 37 | 31 | 27 | 24 | 36 | 31 | 27 | 24 | 29 | 26 | 23 | 28 | 25 | 23 | 27 | 25 | 23 | 22 |
| 4 | 33 | 27 | 23 | 20 | 32 | 27 | 23 | 20 | 26 | 22 | 19 | 25 | 22 | 19 | 24 | 21 | 19 | 18 |
| 5 | 30 | 24 | 20 | 17 | 29 | 24 | 20 | 17 | 23 | 19 | 16 | 22 | 19 | 16 | 21 | 18 | 16 | 15 |
| 6 | 28 | 22 | 17 | 14 | 27 | 21 | 17 | 14 | 20 | 17 | 14 | 19 | 16 | 14 | 19 | 16 | 14 | 13 |
| 7 | 26 | 19 | 15 | 12 | 25 | 19 | 15 | 12 | 18 | 15 | 12 | 18 | 14 | 12 | 17 | 14 | 12 | 11 |
| 8 | 24 | 18 | 14 | 11 | 23 | 17 | 13 | 11 | 17 | 13 | 11 | 16 | 13 | 11 | 15 | 13 | 11 | 10 |
| 9 | 22 | 16 | 12 | 10 | 22 | 16 | 12 | 10 | 15 | 12 | 9 | 15 | 12 | 9 | 14 | 11 | 9 | 9 |
| 10 | 21 | 15 | 11 | 9 | 20 | 14 | 11 | 9 | 14 | 11 | 9 | 14 | 11 | 8 | 13 | 10 | 8 | 8 |

Specifications



| ZONAL LUMEN SUMMARY | | | |
|---------------------|--------|-------|-------|
| ZONE | LUMENS | %LAMP | %FIXT |
| 0-30 | 254 | 8.8 | 20 |
| 0-60 | 838 | 28.9 | 65.9 |
| 0-90 | 1272 | 43.9 | 100 |
| 90-180 | 0 | 0 | 0 |
| 0-180 | 1272 | 43.9 | 100 |

Total Fixture Efficiency: 43.9%

Harris Lighting
Innovative Efficient Solutions