

Super Strip Fixture (MFSS)

Application

Ideal replacement for T12 strips or Low Bay HID fixtures

Construction

Reflectors: Precision formed, high performance, 95% total reflectance specular reflector, warranted for 25 years or 91% total reflectance white pre-painted aluminum. Available up-light slots reduce cave effect

Body: Channel, ends and brackets are manufactured from code gauge cold rolled steel and have white baked enamel finishes.

Ballast: Standard ballast are high performance electronic, Class P, non PCB, sound rated A, UL certified.

Mounting: fixture may be surface mounted or hung with aircraft grade steel cable.

Electrical

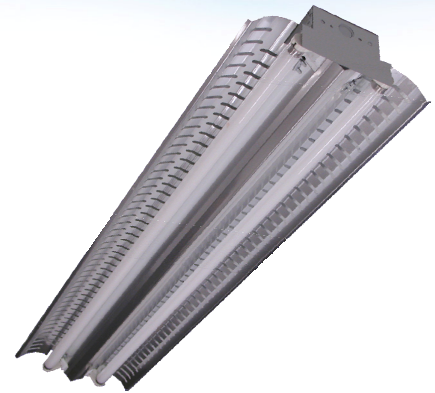
UL listed wire rated for required temperature and voltage. Lamps are secured with twist-locking sockets.

Warranty

One year standard warranty on fixture. Ballast carries 3-5 year manufacture warranty.

Options

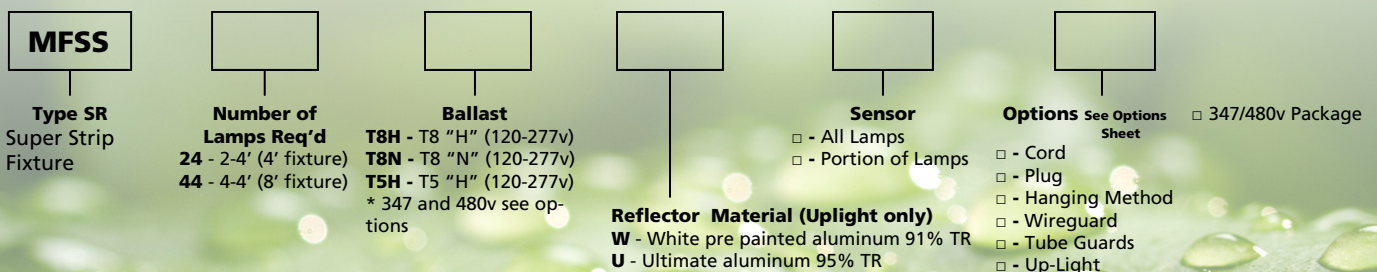
Lamps, Aircraft Wire Hanger, Sensors, Cord and Plug, Up-Light, 347v and 480v. (See available options)



Features

- Lightweight strip design
- Total Luminaire Efficiency: 93.7%
- Spacing Criteria 0-Deg: 1.3, 90-Deg:1.4
- Available in both T8 and T5
- Factory supplied lamps are available in various CRI ratings, temperature colors and rated life
- Ballast and wiring access without the use of tools.
- Instant Restrike
- Dimming/Occupancy sensor compatible

Ordering Information Use the Flow chart below to configure the part number. Actual part number may vary due to configuration.





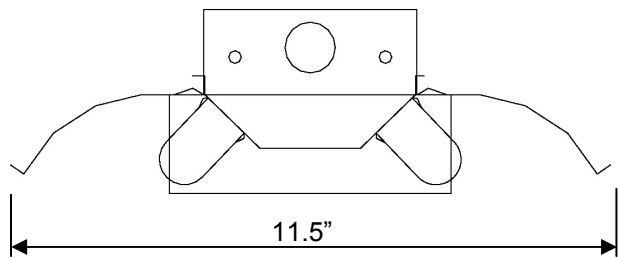
RC	80				70				50			30			10			0
RW	70	50	30	10	70	50	30	10	50	30	10	50	30	10	50	30	10	0
0	109	109	109	109	106	106	106	106	99	99	99	93	93	93	87	87	87	84
1	99	94	89	85	95	91	87	83	85	82	79	79	77	74	75	73	71	68
2	89	81	74	68	86	78	72	67	73	68	64	69	64	61	65	61	58	55
3	81	71	63	56	78	68	61	55	64	58	53	60	55	51	57	53	49	46
4	74	62	54	47	71	60	52	46	57	50	45	53	48	43	50	45	41	39
5	67	55	46	39	64	53	45	39	50	43	37	47	41	36	44	39	35	33
6	62	49	40	34	59	47	39	33	45	37	32	42	36	31	40	34	30	28
7	57	44	35	29	54	42	34	29	40	33	28	38	32	27	36	30	26	24
8	52	39	31	25	50	38	30	25	36	29	24	34	28	23	32	27	22	20
9	48	35	27	21	46	34	26	21	32	25	21	30	24	20	29	23	19	17
10	45	32	24	19	43	31	24	19	29	23	18	28	22	18	26	21	17	15

Photometrics

Coefficient of Utilization

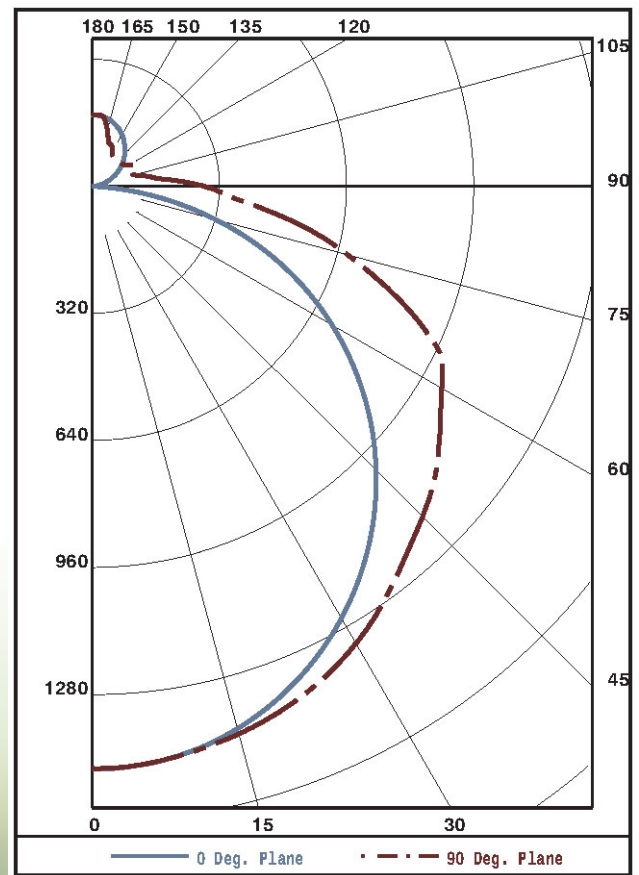
2 FO32 Fixture
Report Number
LTL 14329

Specifications



ZONAL LUMEN SUMMARY			
ZONE	LUMENS	%LAMP	%FIXT
0- 30	1160	18.7	20.0
0- 60	3611	58.2	62.1
0- 90	5211	84.1	89.7
90-180	599	9.7	10.3
0-180	5811	93.7	100.0

Total Fixture Efficiency: 93.7%



4035 Reynolds Blvd.
Green Cove Springs, FL 32043

(800) 331-2216 ■ HarrisLighting.com

