

TROFFER RECESSED OPEN PARABOLIC FIXTURE MFTROP

Application

The TROP Series 2 and 3 lamp Troffer offers the retail or office environment a highly efficient 2' x 4' and 2' x 2' fixture. This fixture delivers a wide distribution of light with significant energy savings over standard 4-lamp troffers.

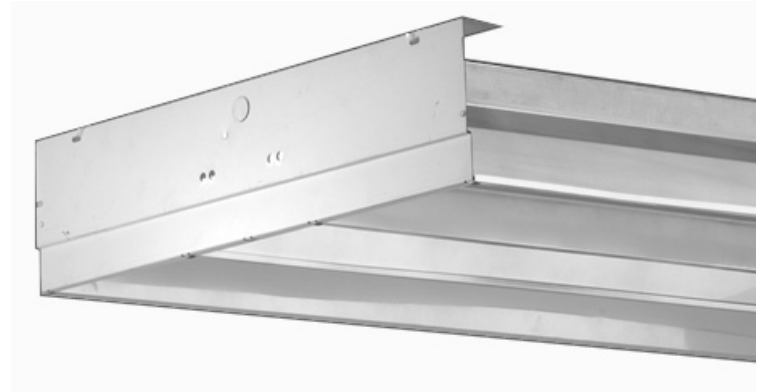
Construction

Construction: Body and ends are manufactured from code gauge either Mill Finish Aluminum or Cold Rolled Steel with white baked enamel finishes.

Reflectors: Precision formed, high performance, 95% total reflectance specular reflector, warranted for 25 years or 91% total reflectance white pre-painted aluminum designed to achieve both even and wide pattern of light.

Features

- Total Luminaire Efficiency: 84.0%
- Spacing Criteria 0-Deg: 1.2, 90-Deg:1.5
- Available in both T8 and T5
- Optional Factory supplied lamps are available in various CRI ratings, temperature colors and rated life Ballast and wiring access
- Ballast and wiring access without the use of tools.
- Instant Restrike
- Dimming/Occupancy sensor compatible



Electrical

UL listed wire rated for required temperature and voltage. Lamps are secured with twist-locking sockets.

Warranty

One year standard warranty on fixture. Ballast carries 3-5 year manufacture warranty.

Options

Lamps (See available options)

Ordering Information

Use the Flow chart below to configure the part number. Actual part number may vary due to configuration.

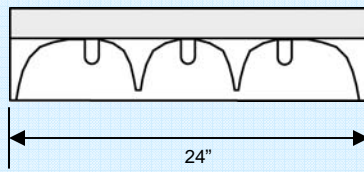
MFTROP	Type TROP
	Number of Lamps Req'd 22 - 2-2' 24 - 2-4' 32 - 3-2' 34 - 3-4'
	Ballast T8H - T8 "L" (120-277v) T8N - T8 "N" (120-277v) T5H - T5 "H" (120-277v) * 347 and 480v see options
	Reflector Material W - White pre painted aluminum 91% TR U - Ultimate aluminum 95% TR
	Sensor <input type="checkbox"/> - All Lamps <input type="checkbox"/> - Portion of Lamps
	Options See Options Sheet <input type="checkbox"/> Lamps

Photometrics

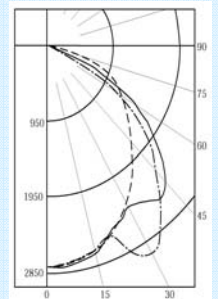
Coefficient of Utilization 3 FO32 Ult Fixture Report

RC	80				70				50			30			10			0
RW	70	50	30	10	70	50	30	10	50	30	10	50	30	10	50	30	10	0
0	100	100	100	100	98	98	98	98	93	93	93	89	89	89	86	86	86	84
1	93	90	87	84	91	88	85	83	84	82	80	81	79	78	78	77	75	74
2	86	80	75	70	84	78	74	70	75	71	68	72	69	67	70	67	65	63
3	79	71	65	60	77	69	64	59	67	62	58	65	61	57	63	59	56	55
4	72	63	56	51	71	62	56	51	60	55	50	58	53	50	56	52	49	47
5	67	57	50	45	65	56	49	44	54	48	44	52	47	43	51	46	43	41
6	62	51	44	39	60	50	44	39	49	43	39	48	42	38	46	42	38	36
7	57	46	39	35	56	46	39	34	45	39	34	43	38	34	42	37	34	32
8	53	42	36	31	52	42	35	31	41	35	31	40	34	30	39	34	30	29
9	50	39	32	28	49	38	32	28	37	32	28	37	31	27	36	31	27	26
10	47	36	29	25	46	35	29	25	35	29	25	34	29	25	33	28	25	23

ZONAL LUMEN SUMMARY			
ZONE	LUMENS	%LAMP	%FIXT
0- 30	1077	25.6	30.5
0- 60	3183	75.8	90.2
0- 90	3530	84	100
90-180	0	0.0	0.0
0-180	3530	84	100



Legend 0- deg: ———
45-deg: - - - -

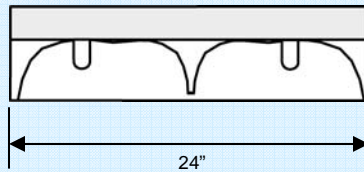


Total Fixture Efficiency: 84.0%

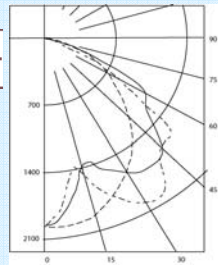
Coefficient of Utilization 2 FO32 Ult Fixture Report

RC	80				70				50			30			10			0
RW	70	50	30	10	70	50	30	10	50	30	10	50	30	10	50	30	10	0
0	110	110	110	110	108	108	108	108	103	103	103	99	99	99	95	95	95	93
1	102	98	94	91	99	96	93	90	92	89	87	88	86	84	85	83	82	80
2	93	86	80	75	91	84	79	74	81	76	72	78	74	71	75	72	69	67
3	85	75	68	62	82	74	67	62	71	65	61	69	64	59	66	62	58	56
4	77	67	59	52	75	65	58	52	63	56	51	61	55	51	59	54	50	48
5	71	59	51	45	69	58	50	45	56	49	44	54	48	44	53	47	43	41
6	65	53	45	39	64	52	44	39	50	43	38	49	43	38	47	42	38	36
7	60	48	40	34	59	47	39	34	46	39	34	44	38	33	43	37	33	31
8	56	43	36	30	55	43	35	30	42	35	30	40	34	30	39	34	29	28
9	52	40	32	27	51	39	32	27	38	31	27	37	31	26	36	30	26	25
10	49	36	29	24	48	36	29	24	35	29	24	34	28	24	33	28	24	22

ZONAL LUMEN SUMMARY			
ZONE	LUMENS	%LAMP	%FIXT
0- 30	1363	23.5	25.3
0- 60	4559	78.6	84.8
0- 90	5379	92.7	100
90-180	0	0	0
0-180	5379	92.7	100



Legend 0- deg: ———
45-deg: - - - -



Total Fixture Efficiency: 92.7%

Harris Lighting
Innovative Efficient Solutions