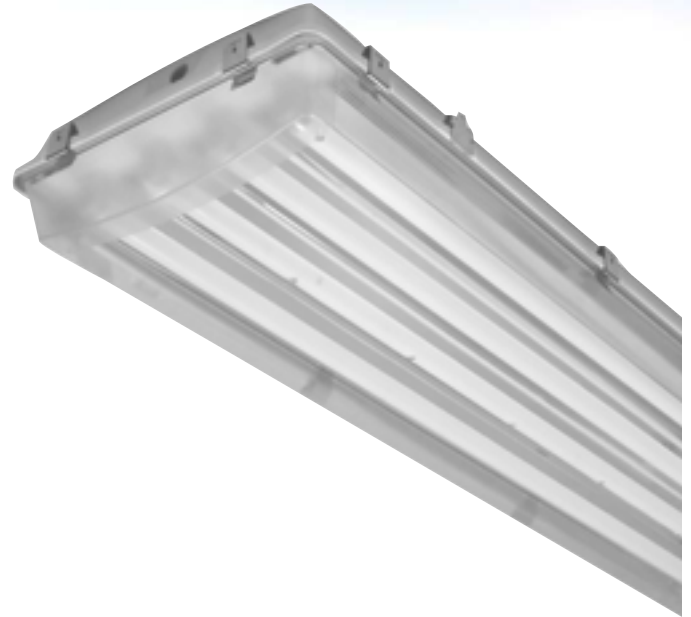


Vapor Tight Fixture 15” Wide Fixture

MFVC15



Application

Replacement for fixtures in high vapor environments

Construction

Gear Tray / Reflector: Standard Steel Gear tray has white baked enamel finish. Optional reflectors available in 95% total reflectance Ultimate aluminum.

Body: High Impact Polyester fiberglass. Continuous poured Gasket, Odor free, Non-toxic, Fire retardant. Stainless Steel action latches.

Lens: Lineal ribbed diffusers.

Ballast: Standard ballast are high performance electronic, Class P, non PCB, sound rated A, UL certified.

Mounting: Tabs for Aircraft Wire hanger

Electrical

UL listed wire rated for required temperature and voltage. Lamps are secured with twist-locking sockets.

Warranty

One year standard warranty on fixture. Ballast carries 3-5 year manufacture warranty.

Options

Lamps, Aircraft Wire Hanger, Cord, Plug, 347v and 480v. (See available options)

Features

- Drilling not required for installation.
- Easy ballast access using tabbed gear tray.
- Body is rated IP65
- Total Luminaire Efficiency: 77.3%
- Spacing Criteria 0-Deg: 1.3, 90-Deg: 1.48
- Available in both T8 and T5
- Factory supplied lamps are available in various CRI ratings, temperature colors and rated life Ballast and wiring access
- Ballast and wiring access without the use of tools.
- Instant Restrike
- Dimming/Occupancy sensor compatible

Ordering Information

Use the Flow chart below to configure the part number. Actual part number may vary due to configuration.

| | |
|---------------|--|
| MFVC15 | Type VC15 Vapor Tight Fixture 15” Wide Fixture |
| | Number of Lamps Req'd 44 - 4-4' 64 - 6-4' |
| | Ballast T8H - T8 “H” (120-277v) T8N - T8 “N” (120-277v) T5H - T5 “H” (120-277v) * 347 and 480v see options |
| | Reflector Material U - Ultimate aluminum 95% TR |
| | Sensor <input type="checkbox"/> - All Lamps <input type="checkbox"/> - Portion of Lamps |
| | Options See Options Sheet <input type="checkbox"/> - Lamps <input type="checkbox"/> - Cord <input type="checkbox"/> - Plug <input type="checkbox"/> - Hanging Method <input type="checkbox"/> - 347/480v Package |

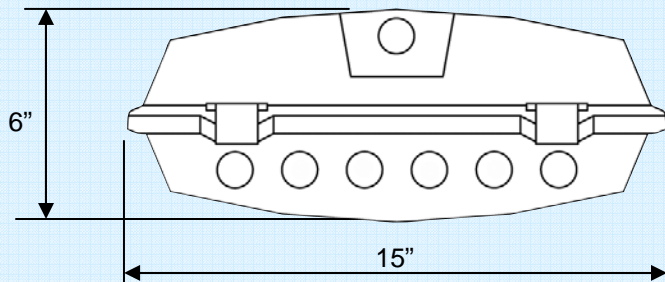
Photometrics

Coefficient of Utilization

6 FO32 Fixture Report

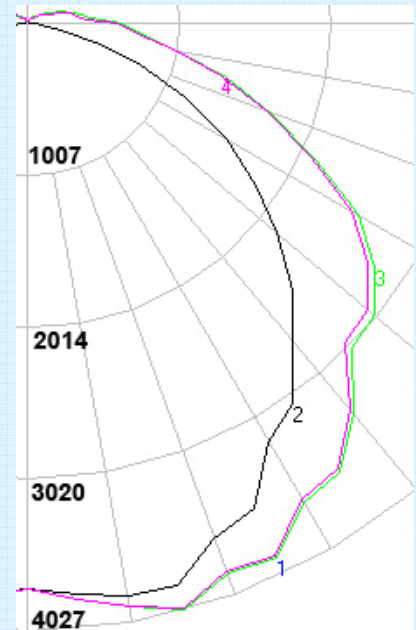
| RC | 80 | | | | 70 | | | | 50 | | | 30 | | | 10 | | | 0 |
|----|----|----|----|----|----|----|----|----|----|----|----|----|----|----|----|----|----|----|
| RW | 70 | 50 | 30 | 10 | 70 | 50 | 30 | 10 | 50 | 30 | 10 | 50 | 30 | 10 | 50 | 30 | 10 | 0 |
| 0 | 91 | 91 | 91 | 91 | 89 | 89 | 89 | 89 | 84 | 84 | 84 | 79 | 79 | 79 | 75 | 75 | 75 | 74 |
| 1 | 82 | 78 | 74 | 71 | 80 | 76 | 73 | 70 | 72 | 69 | 67 | 68 | 66 | 64 | 65 | 63 | 61 | 59 |
| 2 | 74 | 67 | 62 | 57 | 72 | 66 | 60 | 56 | 62 | 58 | 54 | 59 | 55 | 52 | 56 | 53 | 51 | 49 |
| 3 | 67 | 59 | 52 | 47 | 65 | 57 | 51 | 46 | 54 | 49 | 45 | 52 | 47 | 44 | 49 | 46 | 42 | 40 |
| 4 | 62 | 52 | 45 | 39 | 59 | 51 | 44 | 39 | 48 | 42 | 38 | 46 | 41 | 37 | 44 | 39 | 36 | 34 |
| 5 | 56 | 46 | 39 | 34 | 55 | 45 | 38 | 33 | 43 | 37 | 32 | 41 | 36 | 32 | 39 | 35 | 31 | 29 |
| 6 | 52 | 41 | 34 | 29 | 50 | 40 | 34 | 29 | 39 | 33 | 28 | 37 | 32 | 28 | 35 | 31 | 27 | 25 |
| 7 | 48 | 37 | 30 | 26 | 47 | 37 | 30 | 25 | 35 | 29 | 25 | 34 | 28 | 24 | 32 | 28 | 24 | 22 |
| 8 | 45 | 34 | 27 | 23 | 43 | 33 | 27 | 22 | 32 | 26 | 22 | 31 | 26 | 22 | 30 | 25 | 21 | 20 |
| 9 | 42 | 31 | 25 | 20 | 40 | 31 | 24 | 20 | 29 | 24 | 20 | 28 | 23 | 20 | 27 | 23 | 19 | 18 |
| 10 | 39 | 29 | 22 | 18 | 38 | 28 | 22 | 18 | 27 | 22 | 18 | 26 | 21 | 18 | 25 | 21 | 17 | 16 |

Specifications



| ZONAL LUMEN SUMMARY | | | |
|---------------------|--------|-------|-------|
| ZONE | LUMENS | %LAMP | %FIXT |
| 0- 30 | 3170 | 17.9 | 23.2 |
| 0- 60 | 9611 | 54.3 | 70.2 |
| 0- 90 | 13013 | 73.5 | 95.1 |
| 90-180 | 674 | 3.8 | 4.9 |
| 0-180 | 13687 | 77.3 | 100.0 |

Total Fixture Efficiency: 77.3%



Harris Lighting
Innovative Efficient Solutions